



# 5

## MAJOR DOMAINS OF THE EARTH

As you have read in the first chapter, the earth is the only planet which has life. Human beings can live here because the life sustaining elements of land, water and air are present on the earth.

The surface of the earth is a complex zone in which three main components of the environment meet, overlap and interact. The solid portion of the earth on which we live is called the **Lithosphere**. The gaseous layers that surround the earth, is the **Atmosphere**, where oxygen, nitrogen, carbon dioxide and other gases are found. Water covers a very big area of the earth's surface and this area is called the **Hydrosphere**. The Hydrosphere comprises water in all its forms, that is, ice, water and water vapour.

The **Biosphere** is the narrow zone where we find land, water and air together, which contains all forms of life.



### Word Origin

In the Greek language, *Lithos* means Stone; *Atmos* means Vapour;

*Hudor* means Water; and *Bios* means Life.

Can you make words using the above?

### LITHOSPHERE

The solid portion of the earth is called the *Lithosphere*. It comprises the rocks of the earth's crust and the thin layers of soil that contain nutrient elements which sustain organisms.

There are two main divisions of the earth's surface. The large landmasses are known as the **continents** and the huge water bodies are called the **ocean basins**. All the oceans of the world are connected with one another. Look at the map of the world (Figure 5.1). Are all the land masses connected with one another?

The level of seawater remains the same everywhere. Elevation of land is measured from the level of the sea, which is taken as zero.

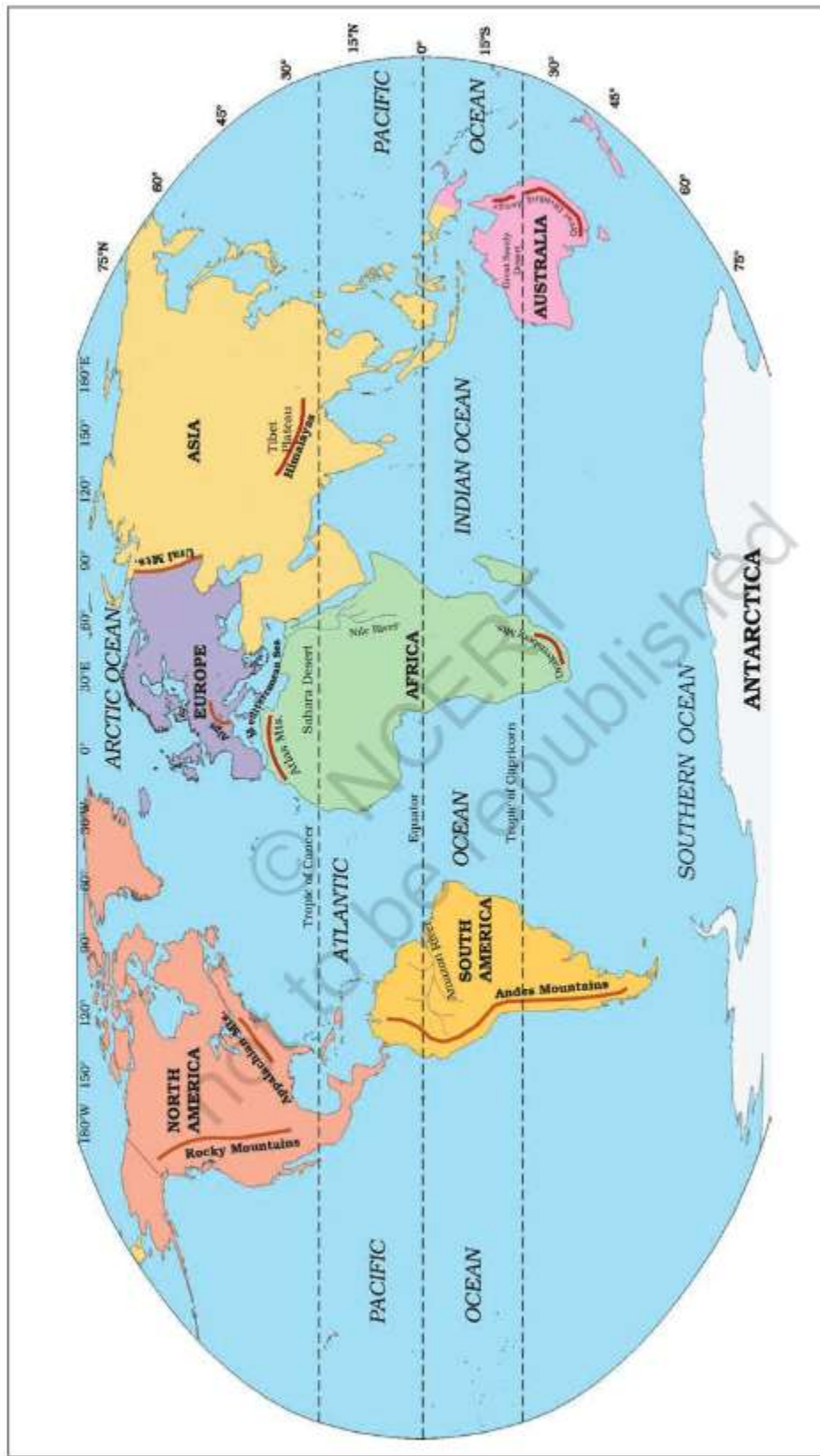


Figure 5.1 : The World : Continents and Oceans



### Do you know?

Edmund Hillary (New Zealand) and Tenzing Norgay Sherpa (India) were the first men to climb the highest mountain peak Mt. Everest on the planet earth on 29<sup>th</sup> May, 1953.

Junko Tabei (Japan) was the first woman to reach the summit on 16<sup>th</sup> May, 1975. The first Indian woman to climb the highest peak on 23<sup>rd</sup> May, 1984 was Bachendri Pal.

The highest mountain peak Mt. Everest is 8,848 metres above the sea level. The greatest depth of 11,022 metres is recorded at Mariana Trench in the Pacific Ocean. Could you imagine that depth of sea is much more than the highest point?

## Continents

There are seven major continents. These are separated by large water bodies. These continents are – Asia, Europe, Africa, North America, South America, Australia and Antarctica. Look at the map of the world (Figure 5.1) and notice that the greater part of the land mass lies in the Northern Hemisphere.

**Asia** is the largest continent. It covers about one-third of the total land area of the earth. The continent lies in the Eastern Hemisphere. The Tropic of Cancer passes through this continent. Asia is separated from Europe by the Ural mountains on the west (Figure 5.1). The combined landmass of Europe and Asia is called the *Eurasia* (Europe + Asia).

**Europe** is much smaller than Asia. The continent lies to the west of Asia. The Arctic Circle passes through it. It is bound by water bodies on three sides. Look at the map of the world and locate it.

**Africa** is the second largest continent after Asia. The Equator or 0° latitude runs almost through the middle of the continent. A large part of Africa lies in the Northern Hemisphere. Look at the Figure 5.1; you will find that it is the only continent through which the Tropic of Cancer, the Equator and the Tropic of Capricorn pass.

The Sahara Desert, the world's largest hot desert, is located in Africa. The continent is bound on all sides by oceans and seas. Look at the world map (Figure 5.1). You will notice that the world's longest river the **Nile**, flows through Africa. Notice where the Equator, the Tropic of Cancer and the Tropic of Capricorn pass in the map of Africa.

**North America** is the third largest continent of the world. It is linked to South America by a very narrow strip of land called the Isthmus of Panama. The continent lies completely in the Northern and Western Hemisphere. Three oceans surround this continent. Can you name these oceans?

**South America** lies mostly in the Southern Hemisphere. Which two oceans surround it on the east and the west? The Andes, world's longest mountain range, runs through its length from north to south (Figure 5.1). South America has the world's largest river, the Amazon.

**Australia** is the smallest continent that lies entirely in the Southern Hemisphere. It is surrounded on all sides by the oceans and seas. It is called an island continent.

**Antarctica**, completely in the Southern Hemisphere, is a huge continent. The South Pole lies almost at the centre of this continent. As it is located in the South Polar Region, it is permanently covered with thick ice sheets. There are no permanent human settlements. Many countries have research stations in Antarctica. India also has research stations there. These are named as **Maitri** and **Dakshin Gangotri**.

## HYDROSPHERE

The earth is called the *blue planet*. More than 71 per cent of the earth is covered with water and 29 per cent is with land. Hydrosphere consists of water in all its forms. As running water in oceans and rivers and in lakes, ice in glaciers, underground water and the water vapour in atmosphere, all comprise the hydrosphere.

More than 97% of the Earth's water is found in the oceans and is too salty for human use. A large proportion of the rest of the water is in the form of icesheets and glaciers or under the ground and a very small percentage is available as fresh water for human

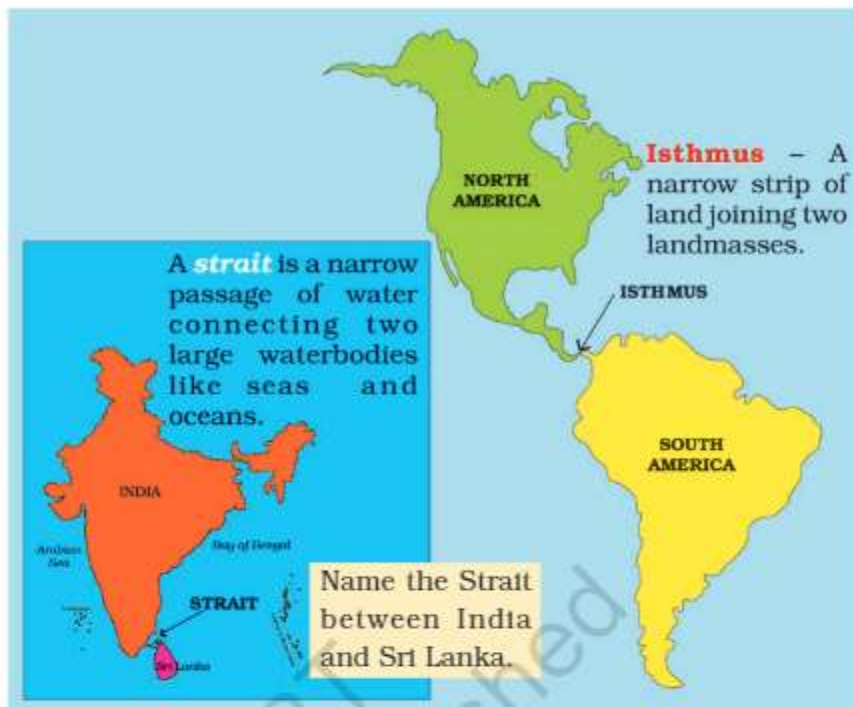
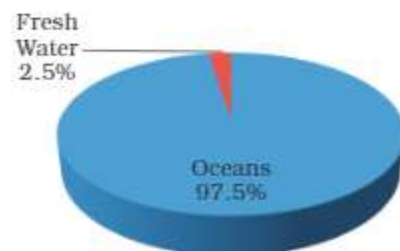


Figure 5.2 : Isthmus and Strait



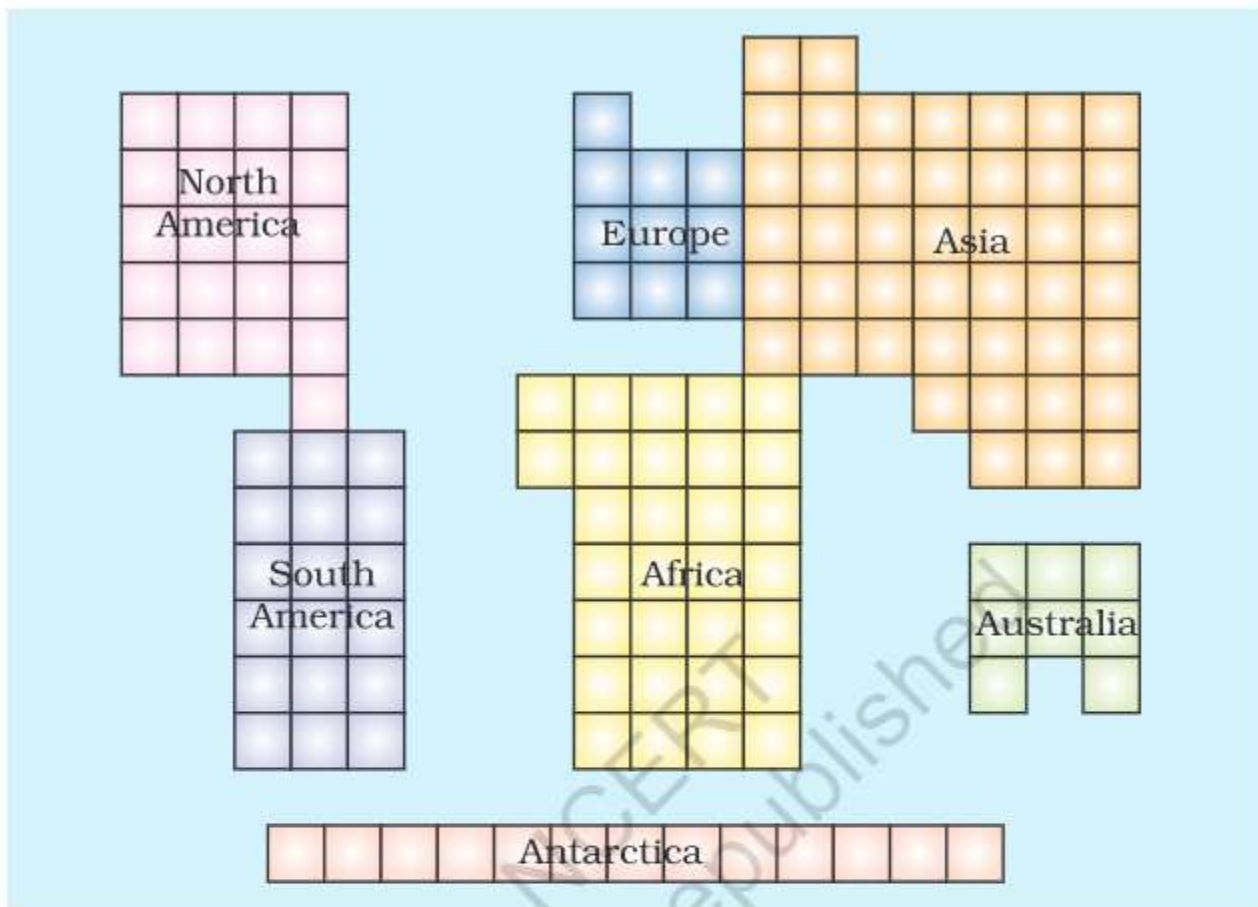


Figure 5.3 : Comparative size of the continents

Count the squares given in Figure 5.3 and answer the following :

(a) Name the largest continent; (b) Which is larger – Europe or Australia?

use. Hence, despite being a 'blue planet' we face a shortage of water!!

### Oceans

Oceans are the major part of hydrosphere. They are all interconnected.

The ocean waters are always moving. The three chief movements of ocean waters are the waves, the tides and the ocean currents. The five major oceans are the Pacific Ocean, the Atlantic Ocean, the Indian Ocean, the Southern Ocean and the Arctic Ocean, in order of their size (Figure 5.1).

The Pacific Ocean is the largest ocean. It is spread over one-third of the earth. Mariana Trench, the deepest part of the earth, lies in the Pacific Ocean. The Pacific Ocean is almost circular in shape. Asia, Australia,

North and South Americas surround it. Look at the map and find out the location of the continents around the Pacific Ocean.

The Atlantic Ocean is the second largest Ocean in the world. It is 'S' shaped. It is flanked by the North and South Americas on the western side, and Europe and Africa on the eastern side. The coastline of Atlantic Ocean is highly *indented*. This irregular and indented coastline provides ideal location for natural harbours and ports. From the point of view of commerce, it is the busiest Ocean.

The Indian Ocean is the only ocean named after a country, that is, India. The shape of ocean is almost triangular. In the north, it is bound by Asia, in the west by Africa and in the east by Australia.

The Southern Ocean encircles the continent of Antarctica and extends northward to 60 degrees south latitude.

The Arctic Ocean is located within the Arctic Circle and surrounds the North Pole. It is connected with the Pacific Ocean by a narrow stretch of shallow water known as Bering strait. It is bound by northern coasts of North America and Eurasia.

## ATMOSPHERE

The earth is surrounded by a layer of gas called the **atmosphere**. This thin blanket of air is an integral and important aspect of the planet. It provides us with the air we breathe and protects us from the harmful effects of sun's rays.

The atmosphere extends up to a height of about 1,600 kilometres. The atmosphere is divided into five layers based on composition, temperature and other properties. These layers starting from earth's surface are called the troposphere, the stratosphere, the mesosphere, the thermosphere and the exosphere.

The atmosphere is composed mainly of nitrogen and oxygen, which make up about 99 per cent of clean, dry air. Nitrogen 78 per cent, oxygen 21 per cent and other gases like carbondioxide, argon and others comprise 1 per cent by volume. Oxygen is the breath of life while nitrogen helps in the growth of living organisms. Carbon dioxide, though present in minute amount, is important as it absorbs heat radiated by the earth, thereby keeping the planet warm. It is also essential for the growth of plants.

The density of the atmosphere varies with height. It



Figure 5.4 : Layers of the Atmosphere



Figure 5.5 : A mountaineer

is maximum at the sea level and decreases rapidly as we go up. You know, the climbers experience problems in breathing due to this decrease in the density of air. They have to carry with them oxygen cylinders to be able to breathe at high altitudes. The temperature also decreases as we go upwards. The atmosphere exerts pressure on the earth. This varies from place to place. Some areas experience high pressure and some areas low pressure. Air

moves from high pressure to low pressure. Moving air is known as wind.

### BIOSPHERE – THE DOMAIN OF LIFE

The **biosphere** is the narrow zone of contact between the land, water and air. It is in this zone that life, that is unique to this planet, exists. There are several

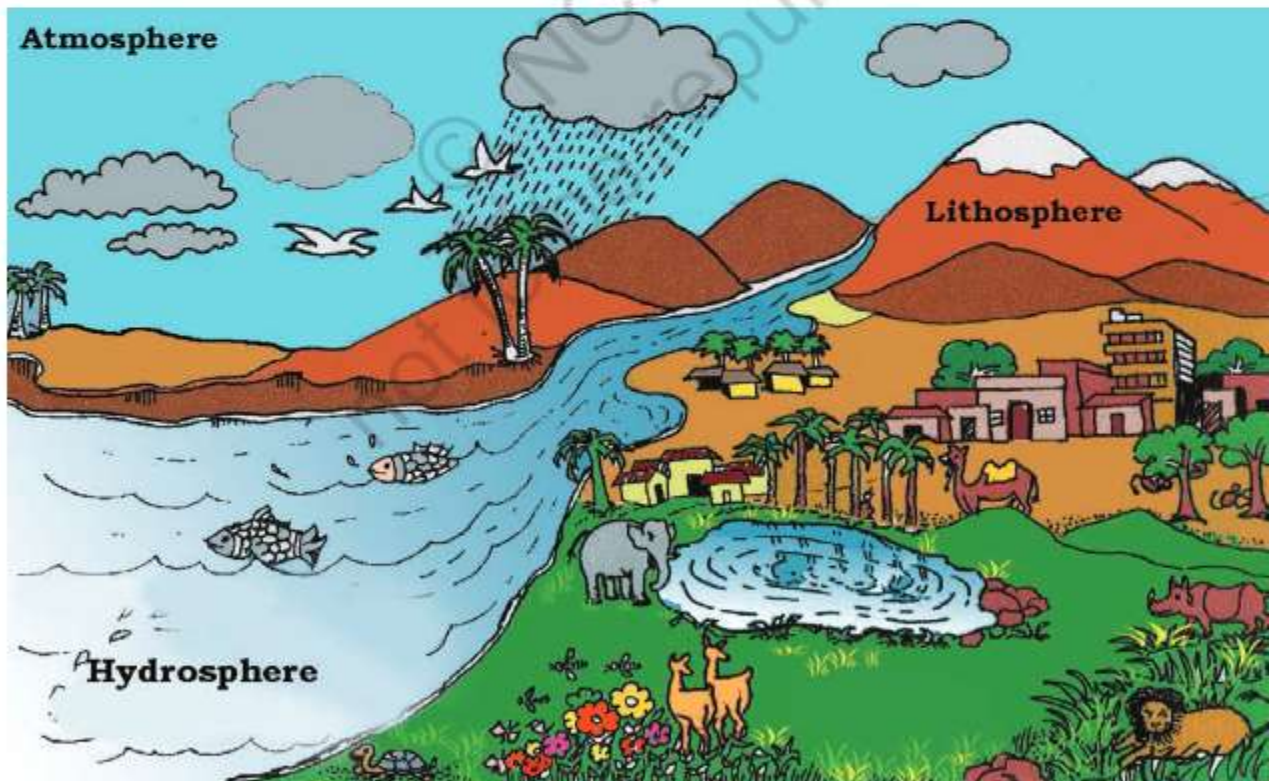


Figure 5.6 : The Biosphere

species of organisms that vary in size from microbes and bacteria to huge mammals. All the living organisms including humans are linked to each other and to the biosphere for survival.

The organisms in the biosphere may broadly be divided into the plant kingdom and the animal kingdom. The three domains of the earth interact with each other and affect each other in some way or the other. For example, cutting of forests for fulfilling our needs of wood, or clearing land for agriculture may lead to fast removal of soil from slopes. Similarly earth's surface may be changed due to natural calamities like earthquakes. For example, there could be submergence of land, as happened in the case of Tsunami recently. Parts of Andaman & Nicobar islands were submerged under water. Discharge of waste material into lakes and rivers makes the water unsuitable for human use. It also damages other forms of life.

Emission from industries, thermal power plants and vehicles, pollute the air. Carbon dioxide ( $\text{CO}_2$ ) is an important constituent of air. But increase in the amount of  $\text{CO}_2$  leads to increase in global temperatures. This is termed as global warming. There is thus, a need to limit the use of resources of the earth to maintain the balance of nature between the domains of the lithosphere, the atmosphere and the hydrosphere.

## EXERCISES

### 1. Answer the following questions briefly.

- What are the four major domains of the earth?
- Name the major continents of the earth.
- Name the two continents that lie entirely in the Southern Hemisphere.
- Name the different layers of atmosphere.
- Why is the earth called the 'blue planet'?
- Why is the Northern Hemisphere called the Land Hemisphere?
- Why is the Biosphere important for living organisms?



2. Tick the correct answers.

- (a) The mountain range that separates Europe from Asia is  
(i) the Andes                      (ii) the Himalayas                      (iii) the Urals
- (b) The continent of North America is linked to South America by  
(i) an Isthmus                      (ii) a Strait                      (iii) a Canal
- (c) The major constituent of atmosphere by per cent is  
(i) Nitrogen                      (ii) Oxygen                      (iii) Carbon dioxide
- (d) The domain of the earth consisting of solid rocks is  
(i) the Atmosphere                      (ii) the Hydrosphere                      (iii) the Lithosphere
- (e) Which is the largest continent?  
(i) Africa                      (ii) Asia                      (iii) Australia

3. Fill in the blanks.

- (a) The deepest point on the earth is \_\_\_\_\_ in the Pacific Ocean.
- (b) The \_\_\_\_\_ Ocean is named after a country.
- (c) The \_\_\_\_\_ is a narrow contact zone of land, water and air that supports life.
- (d) The continents of Europe and Asia together are known as \_\_\_\_\_.
- (e) The highest mountain peak on the earth is \_\_\_\_\_.

**THINGS TO DO**



1. Cut the outline of the continents from an outline map of the world and arrange them according to their decreasing sizes.
2. Cut the outline of the continents from an outline map of the world and try to fit them together as a jigsaw puzzle.
3. Collect pictures of expeditions to the Himalayas. Write about the kind of equipment carried by the climbers for protection against sunshine, temperature and the lack of air.

**Map Skills**

1. On the outline map of the world, mark the following :  
Europe, Asia, Antarctica, South America, Australia, Indian Ocean, Pacific Ocean, Atlantic Ocean, Ural Mountains and Isthmus of Panama.

